

**ADDENDUM NO. 1
TO THE
PLANS AND SPECIFICATIONS
FOR
PARK IMPROVEMENTS
CHURCH STREET PARK
FOR THE
CITY OF LOOGOOTEE
MARTIN COUNTY, INDIANA**

MEI #2022115-00

Issue Date: May 6, 2024

This addendum becomes part of the Contract Documents and modifies the original Contract Documents as noted below. Acknowledge receipt of this Addendum by inserting the number and issue date of this addendum in the blank space provided on the Bid Form.

The following items shall amend, clarify, and/or correct plans and/or specifications for the above project and shall take precedence over items in conflict herein:

- Item No. 1: Reference Drawings:** Plan Sheet 8, Typical Details
- Delete:** Coniferous Tree Planting Detail
- Clarification:** City of Loogootee will plant all trees after construction.
-
- Item No. 2: Reference Drawings:** Plan Sheet 9, Demolition Plan
- Clarification:** City of Loogootee will remove the existing concrete sidewalks, curbs, driveway, and lights prior to the start of construction.
-
- Item No. 3: Reference Drawings:** Plan Sheet 10, Plan Sheet
- Change:** INSTALL A NEW YARD HYDRANT / POST HYDRANT
- To Read:** INSTALL A NEW YARD HYDRANT
- Add:** NOTE: CITY OF LOOGOOTEE TO PROVIDE ALL MATERIALS FOR WATER SERVICE LINES AND SANITARY SEWER LATERALS TO THE CONTRACTOR FOR INSTALLATION. CONTRACTOR SHALL COORDINATE WITH PUBLIC WORKS SUPERINTENDENT, BO WILSON, FOR NEEDED MATERIALS IN ADVANCE OF CONSTRUCTION ACTIVITY.

Item No. 4: Reference Drawings: Plan Sheet 14, Proposed Shelter – Foundation Plan
Delete: Sheet 14 in its entirety.
Replace with: Sheet 14, Rev. # 1 TMK: 5/6/2024, attached to this addendum.

Item No. 5: Reference Drawings: Plan Sheet 15, Proposed Shelter – Foundation Details
Delete: Sheet 15 in its entirety.
Replace with: Sheet 15, Rev. # 1 TMK: 5/6/2024, attached to this addendum.

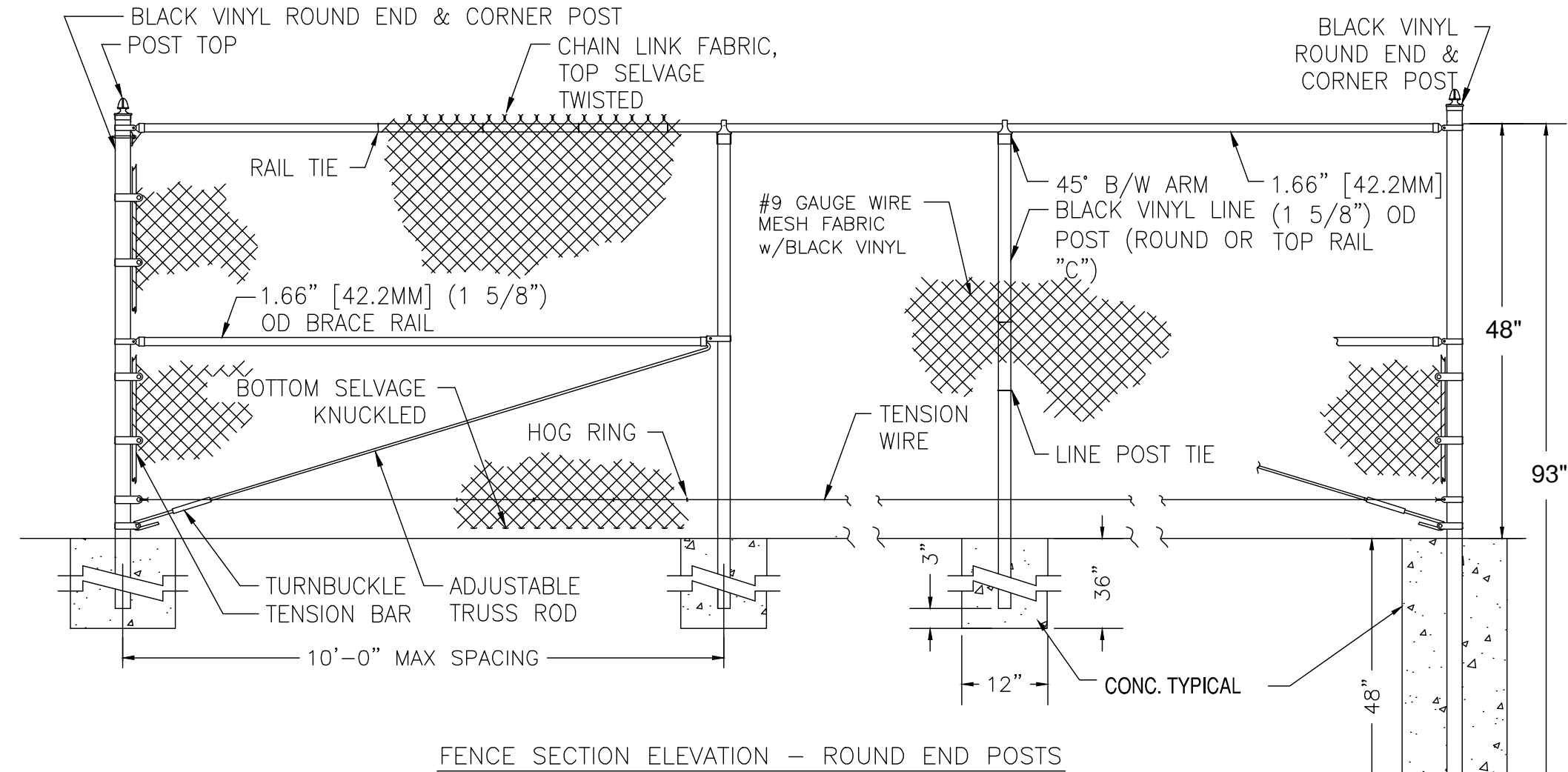
Item No. 6: Reference Drawings: Plan Sheet 16, Structural Canopy
Delete: Sheet 16 in its entirety.
Replace with: Sheet 16, Rev. # 1 TMK: 5/6/2024, attached to this addendum.

Respectfully Submitted,

MIDWESTERN ENGINEERS, INC.

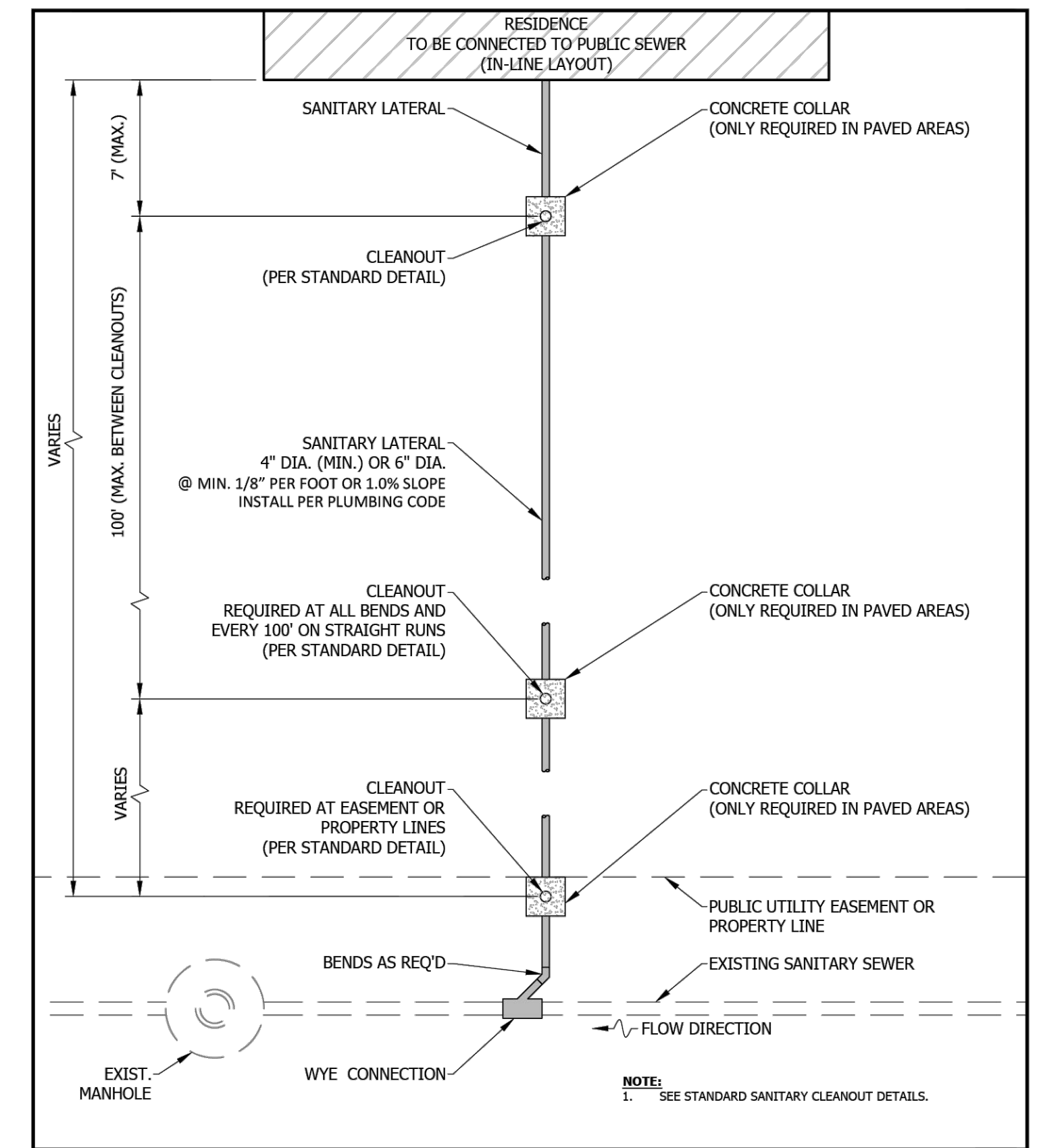


Trey M. Kidwell, P.E.
Senior Project Engineer

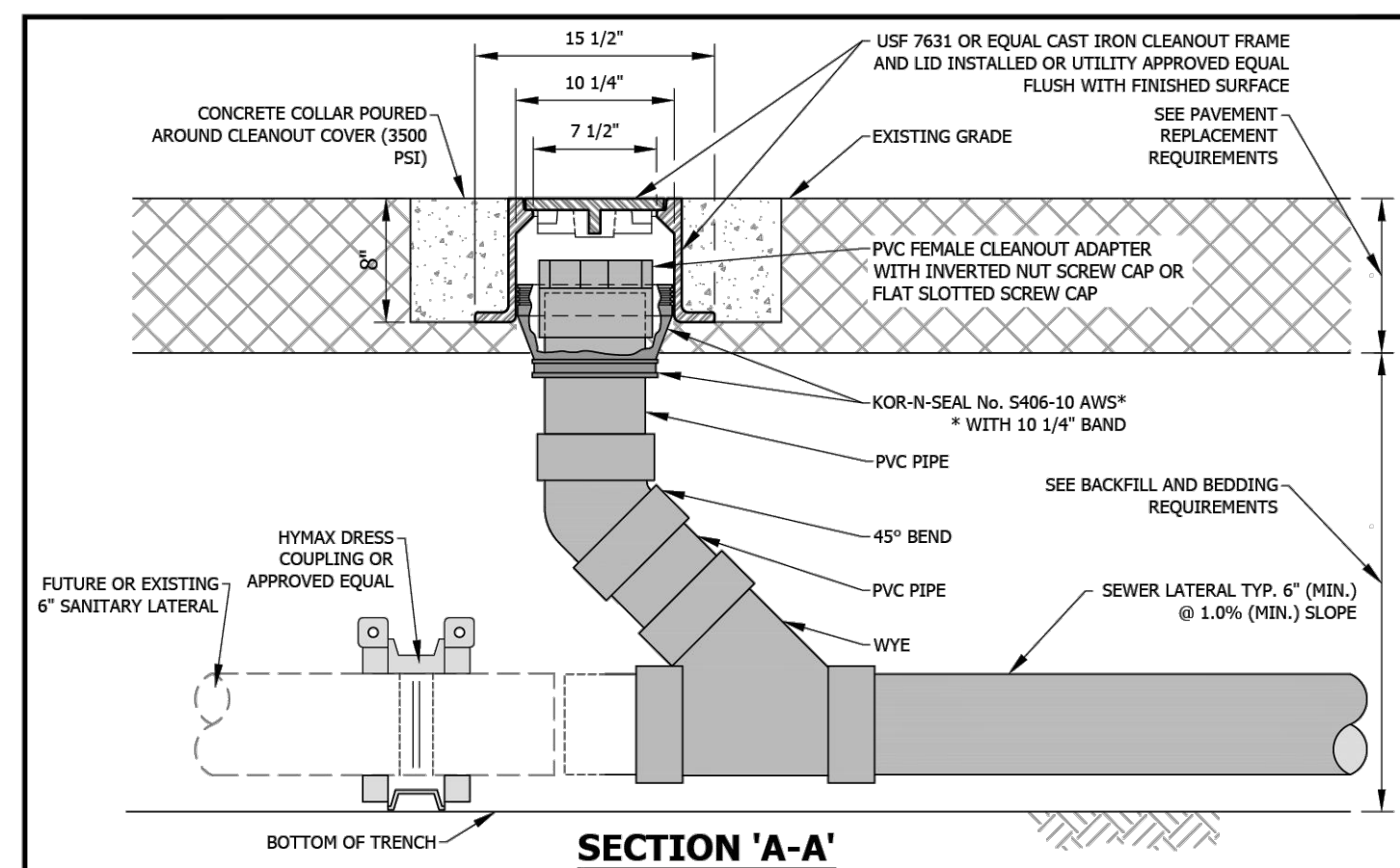


FENCE SECTION ELEVATION - ROUND END POSTS

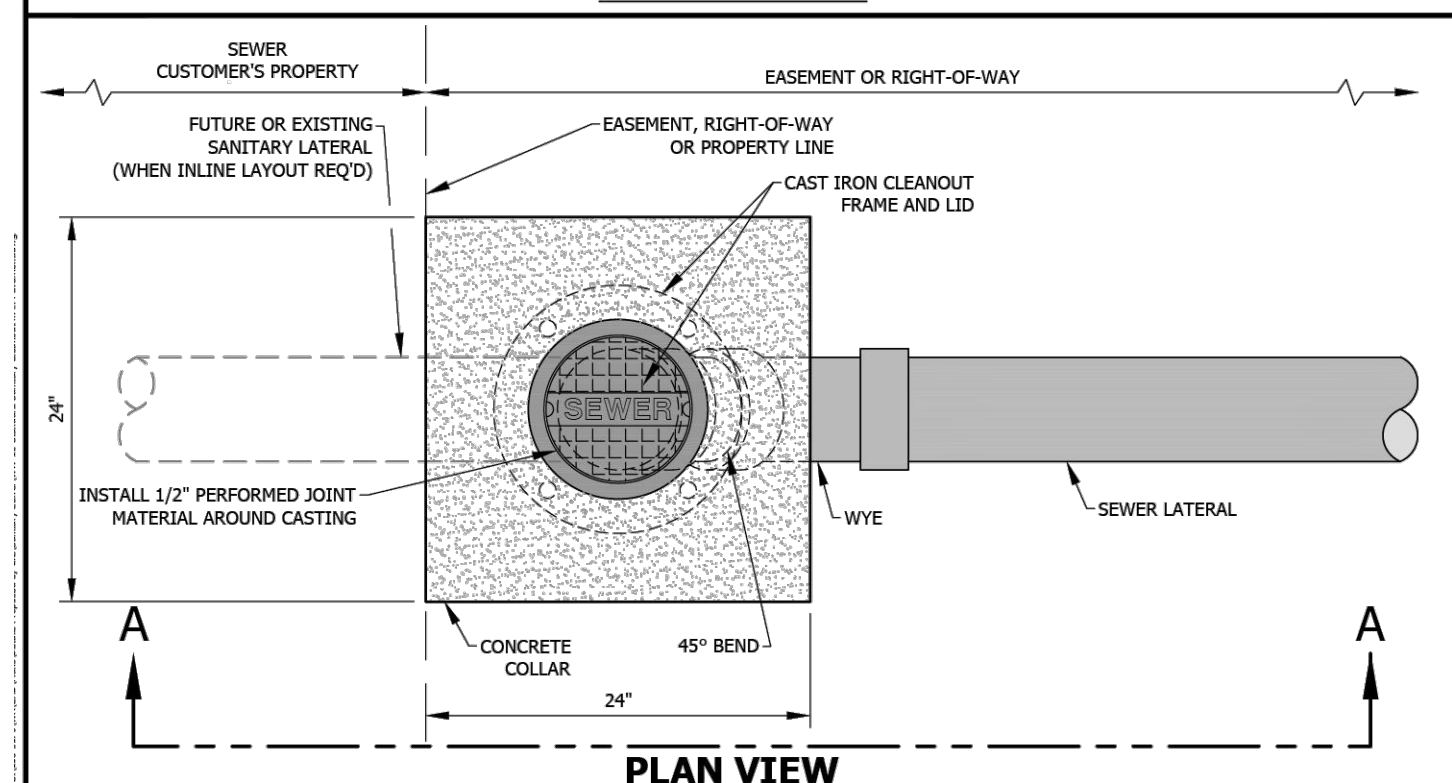
BLACK VINYL CHAINLINK FENCE DETAIL
NOT TO SCALE



LATERAL SEWER CONNECTION DETAIL
NOT TO SCALE



SECTION 'A-A'

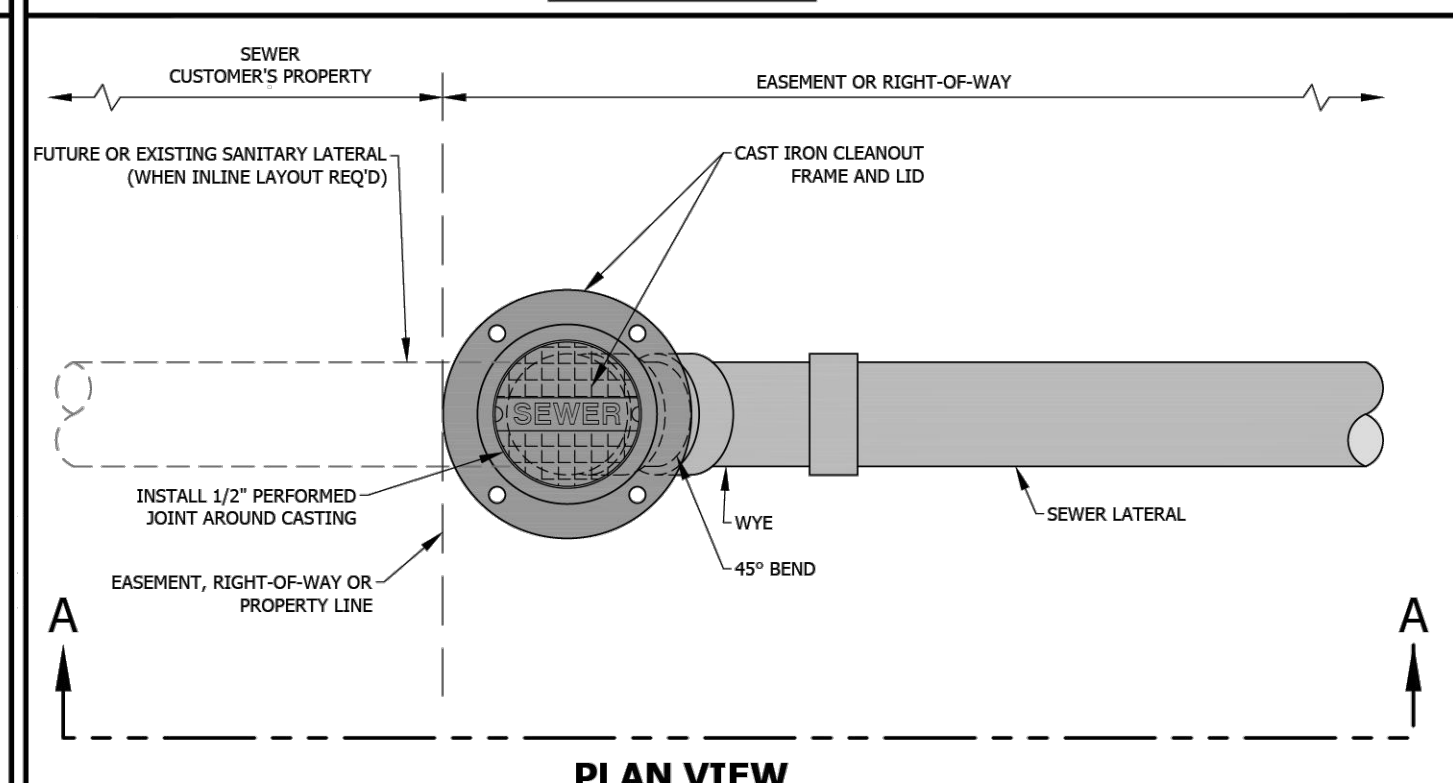


PLAN VIEW

SANITARY CLEAN OUT IN PAVED AREA
NOT TO SCALE

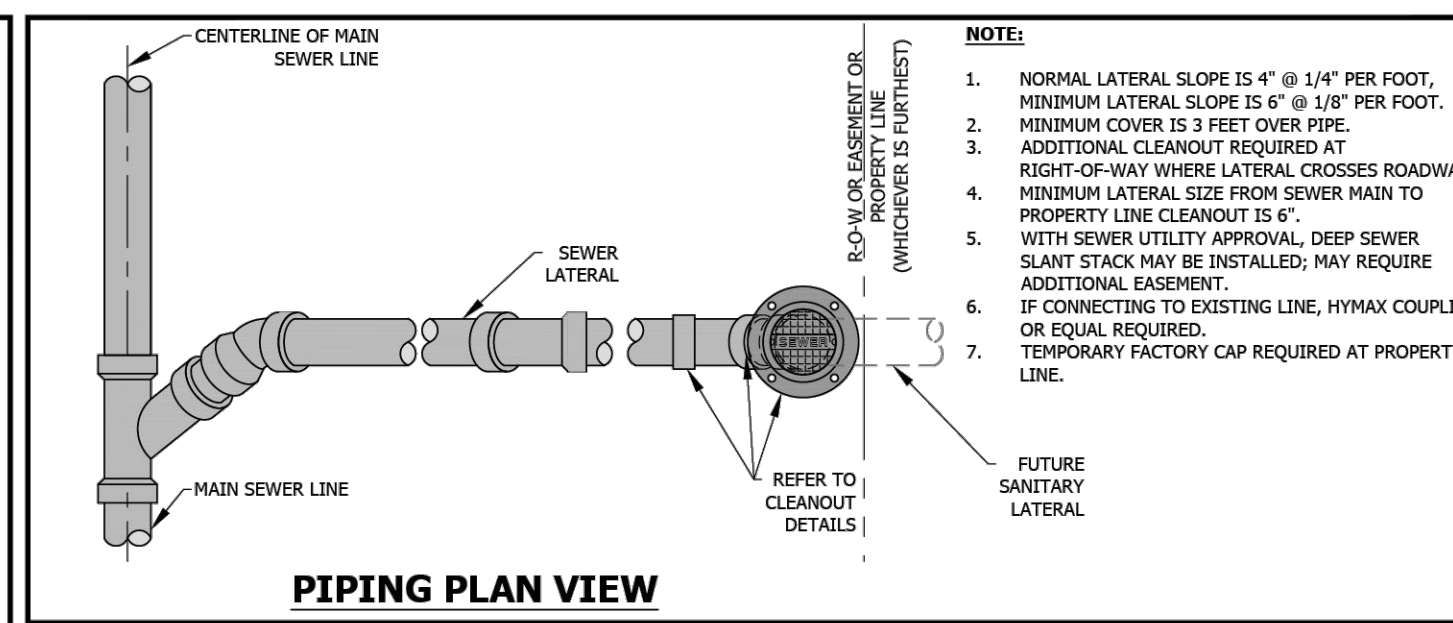


SECTION 'A-A'

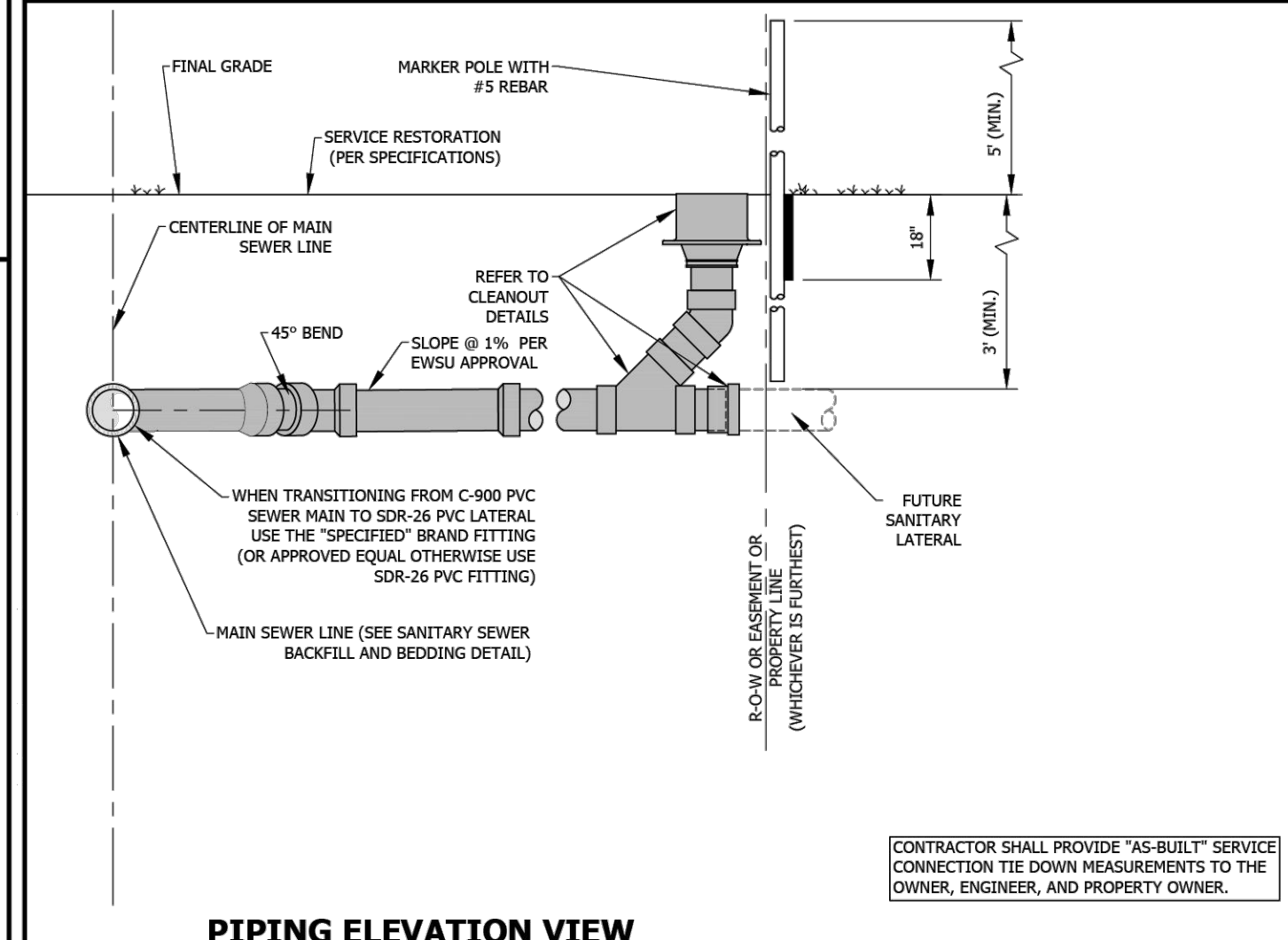


PLAN VIEW

SANITARY CLEAN OUT IN UNPAVED AREA
NOT TO SCALE

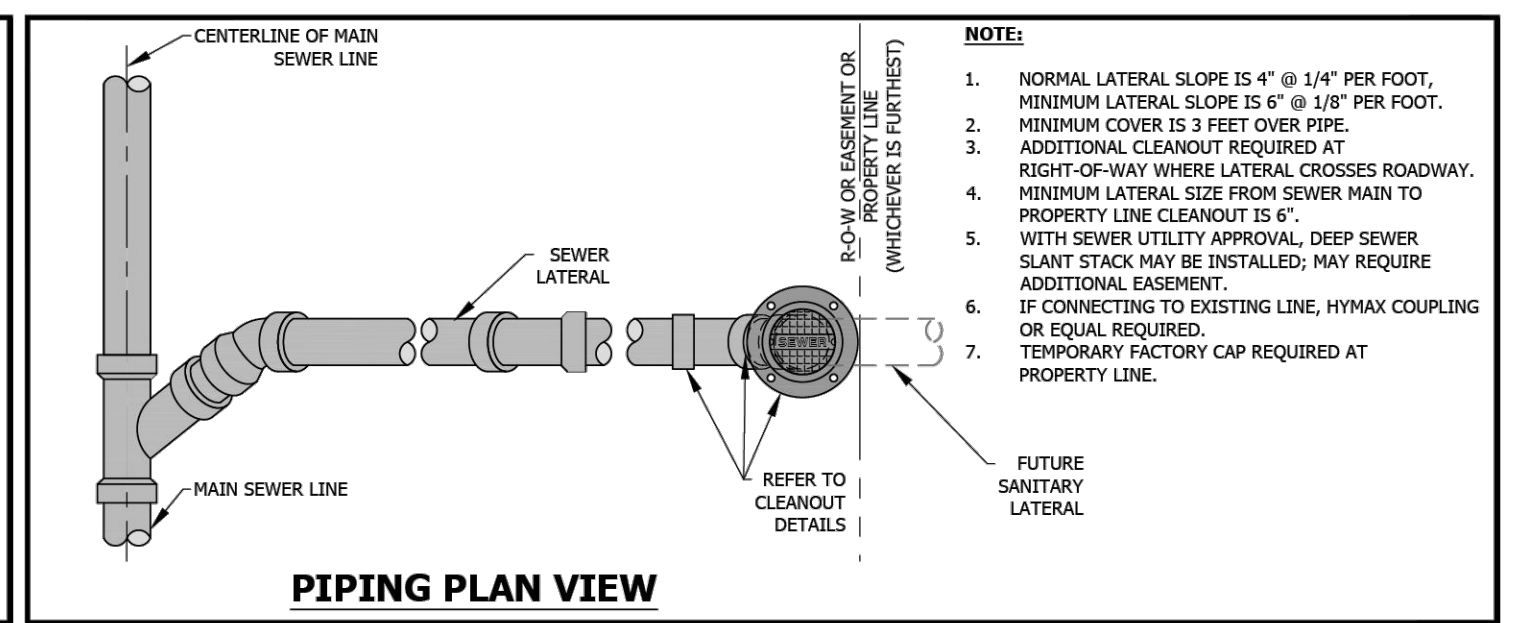


PIPING PLAN VIEW

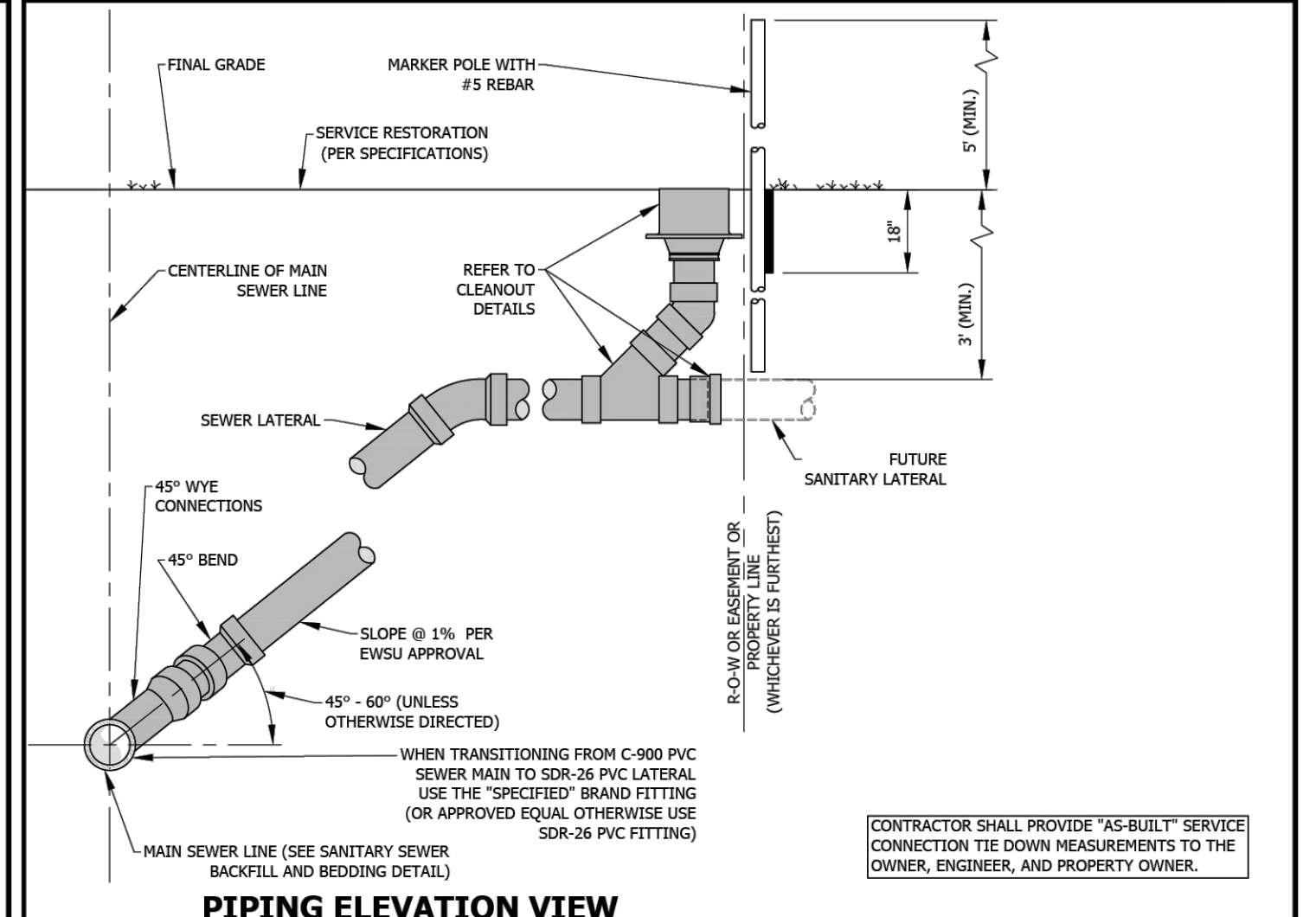


PIPING ELEVATION VIEW

LATERAL CONNECTION LESS THAN 5'
NOT TO SCALE



PIPING PLAN VIEW



PIPING ELEVATION VIEW

LATERAL CONNECTION MORE THAN 5'
NOT TO SCALE

TYPICAL DETAILS

Midwestern Engineers, Inc.
Quality Engineering Services Since 1959
802 West Broadway, S.W., P.O. Box 295
Loogootee, IN 47533
6809 Corporate Drive,
Indianapolis, IN 46228
www.midwesternengineers.com
Tel: 317.262.2600 Fax: 317.262.2601
Civil Mechanical Electrical

**PARK IMPROVEMENTS
CHURCH STREET PARK
CITY OF LOOGOOTEE
MARTIN COUNTY, INDIANA**

REVISIONS
5-6-2024

THEY REGISTERED
No. PE12100483
STATE OF INDIANA
PROFESSIONAL ENGINEER
Troy A. Kimmel
4/10/2024

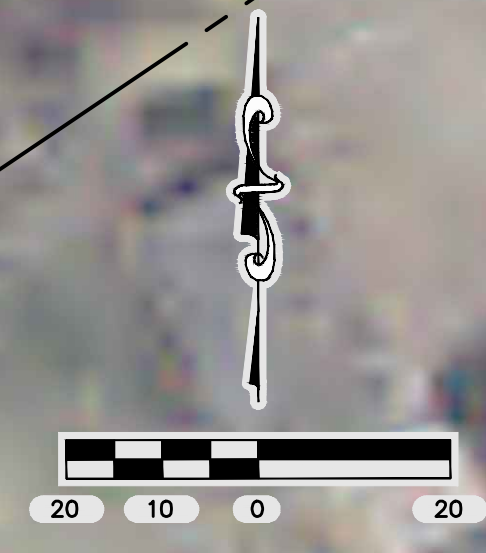
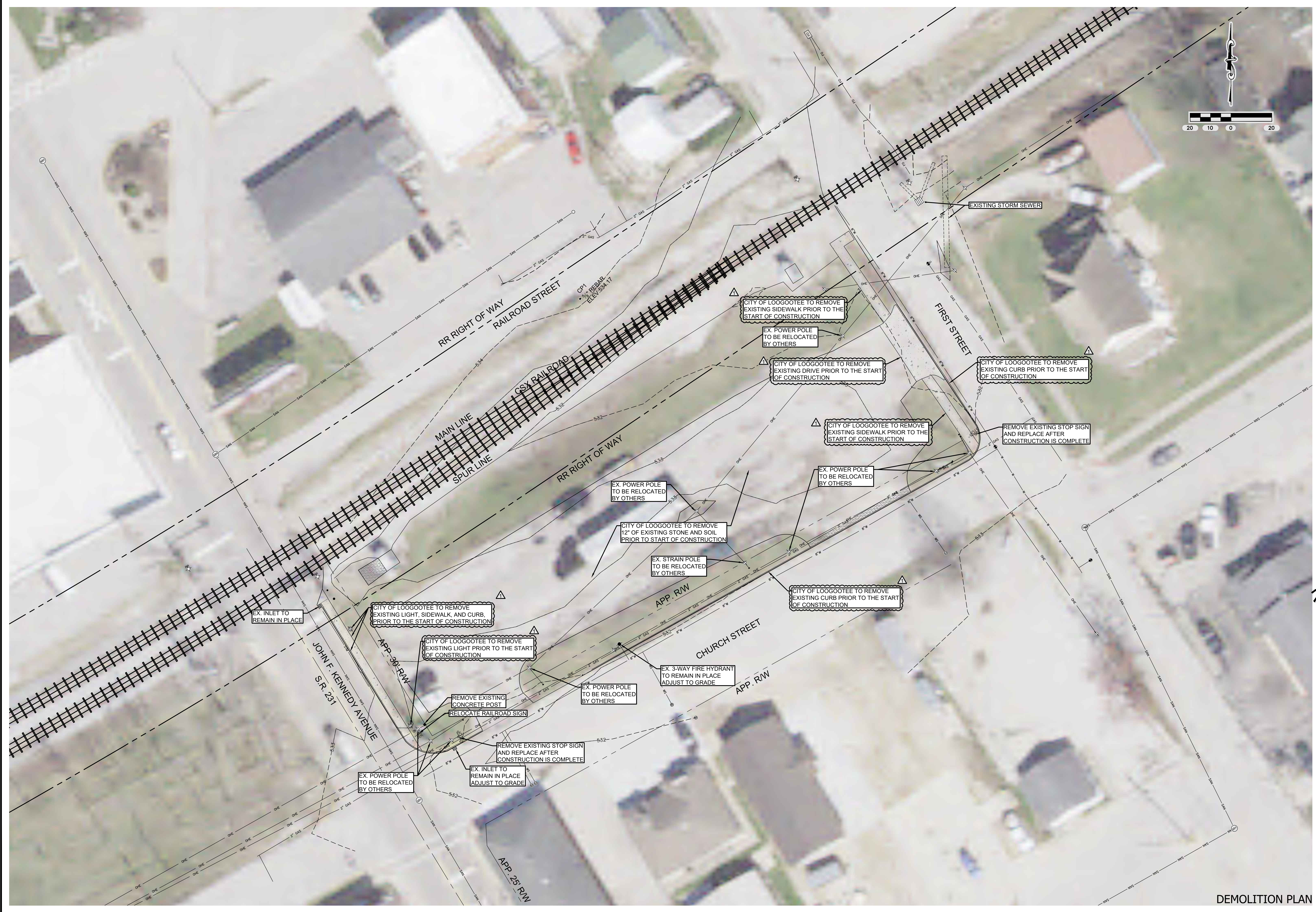
Midwestern Engineers, Inc.
802 West Broadway Street
P.O. Box 295
Loogootee, Indiana 47533

DATE
APRIL 2024
DESIGN
TMK
DRAWN
DRK/MKW
G.C. CHECK
CWR
PROJECT NUMBER
2022115-00

8
8 of 20

FILE NUMBER
43470

Author: DICKOITZ, Proj Date: 5/8/2024 7:48 AM, Path: Z:\CAD\INCOMPLETE\2022115-00_LOOGOOTEE_NEW PARK IMPROVEMENTS PROJECTS_PRODUCING\DWG\08 - SEE FILE.DWG



Author: DKOONTZ, Plot Date: 5/8/2024 7:47 AM
 Path: Z:\CAD\INCOMPLETE\2022\1500 - LOOGOOTEE - NEW PARK IMPROVEMENTS PROJECT\DWG\1500 - DEMOLITION PLAN.DWG

Quality Engineering Services Since 1959
Midwestern Engineers, Inc.
 6809 Corporate Drive,
 Indianapolis, IN 46278
 Phone: 317-338-8888
 Website: www.midwesterneng.com
 Fax: 317-338-3691
 Email: info@midwesterneng.com
 Consultants: Civil, Mechanical, Electrical

PARK IMPROVEMENTS
CHURCH STREET PARK
CITY OF LOOGOOTEE
 MARTIN COUNTY, INDIANA

REVISIONS
 5-6-2024

THE STATE OF INDIANA
 REGISTERED PROFESSIONAL ENGINEER
 No. PE12100483
 STATE OF INDIANA
 PROFESSIONAL ENGINEER
Ray M. Kidwell
 4/10/2024

BID SET
 © 2024
 Midwestern Engineers, Inc.
 802 West Broadway Street
 P.O. Box 295
 Loogootee, Indiana 47553

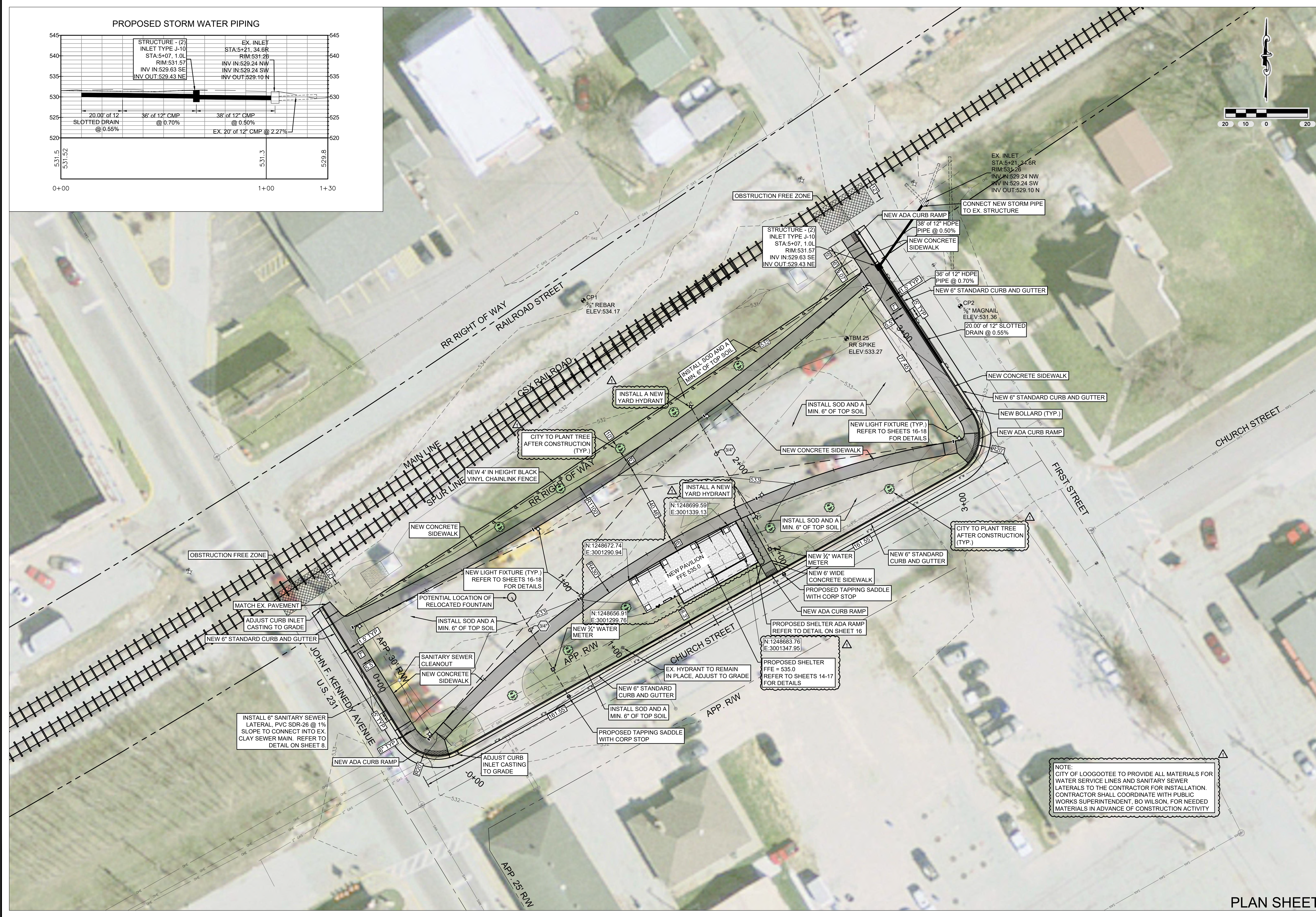
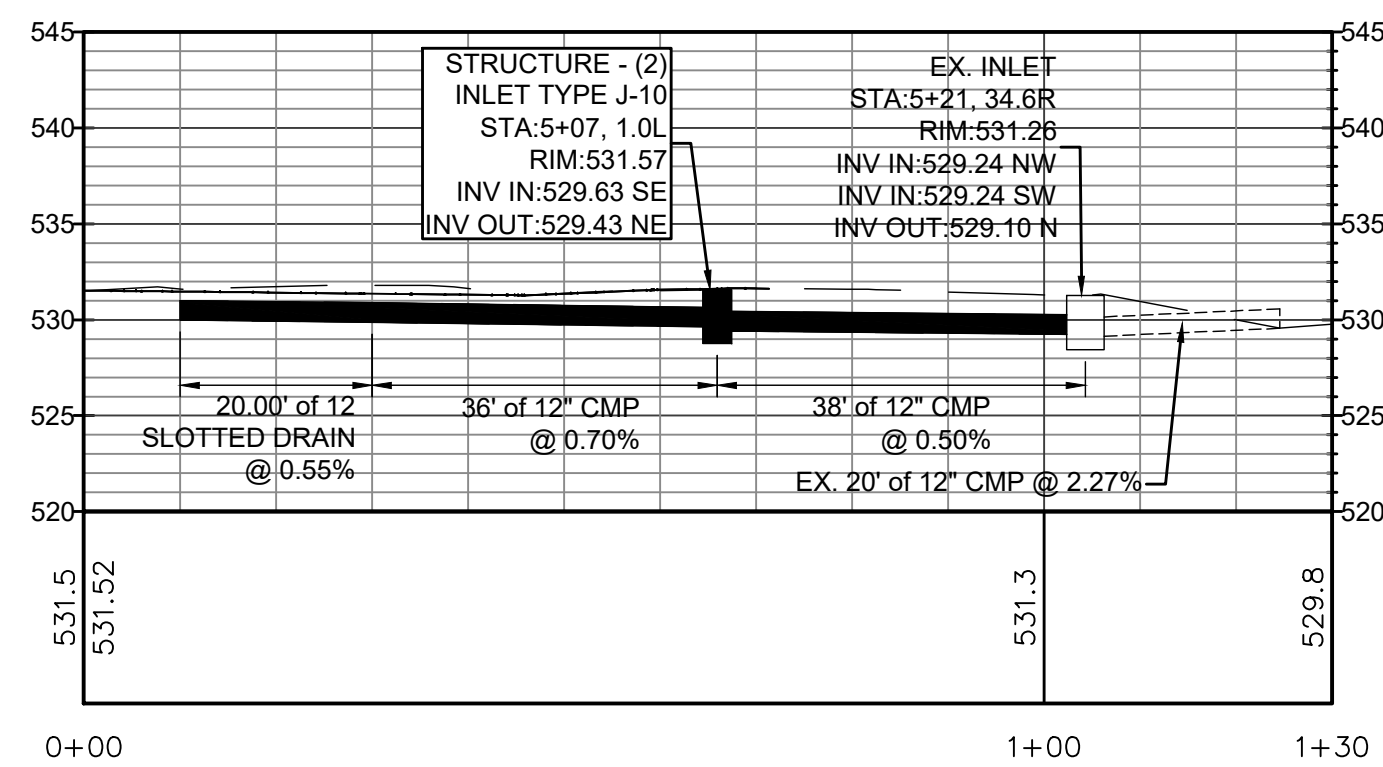
DATE
 APRIL 2024
 DESIGN
 TMK
 DRAWN
 DRK/MKW
 Q.C. CHECK
 CWR
 PROJECT NUMBER
 2022115-00

9
 9 OF 20

FILE NUMBER
 43469

DEMOLITION PLAN

PROPOSED STORM WATER PIPING



NOTE:
CITY OF LOOGOTEE TO PROVIDE ALL MATERIALS FOR WATER SERVICE LINES AND SANITARY SEWER LATERALS TO THE CONTRACTOR FOR INSTALLATION. CONTRACTOR SHALL COORDINATE WITH PUBLIC WORKS SUPERINTENDENT, BO WILSON, FOR NEEDED MATERIALS IN ADVANCE OF CONSTRUCTION ACTIVITY

Author: DKOONTZ, Plot Date: 5/6/2024, 9:19 AM
Path: Z:\CAD\INCOMPLETE\2024\1500_LOOGOTEE_NEW PARK IMPROVEMENTS\PROJECTS\PRODUCTION\1500_SITE PLAN.DWG

Midwestern Engineers, Inc.
Quality Engineering Services Since 1959
6809 Corporate Drive,
Indianapolis, IN 46278
Ph: 317-338-8822
Web: www.midwesterneng.com
Fax: 317-338-3601
E-mail: info@midwesterneng.com

Consultants: Civil Mechanical Electrical

PARK IMPROVEMENTS
CHURCH STREET PARK
CITY OF LOOGOTEE
MARTIN COUNTY, INDIANA

REVISIONS
5-6-2024

THE STATE OF INDIANA
REGISTERED PROFESSIONAL ENGINEER
No. PE12100483
M. KIDWELL
4/10/2024

BID SET
Midwestern Engineers, Inc.
802 West Broadway Street
P.O. Box 295
Loogootee, Indiana 47553

DATE: APRIL 2024
DESIGN: TMK
DRAWN: DRK/MKW
G.C. CHECK: CWR
PROJECT NUMBER: 2022115-00

10
10 OF 20

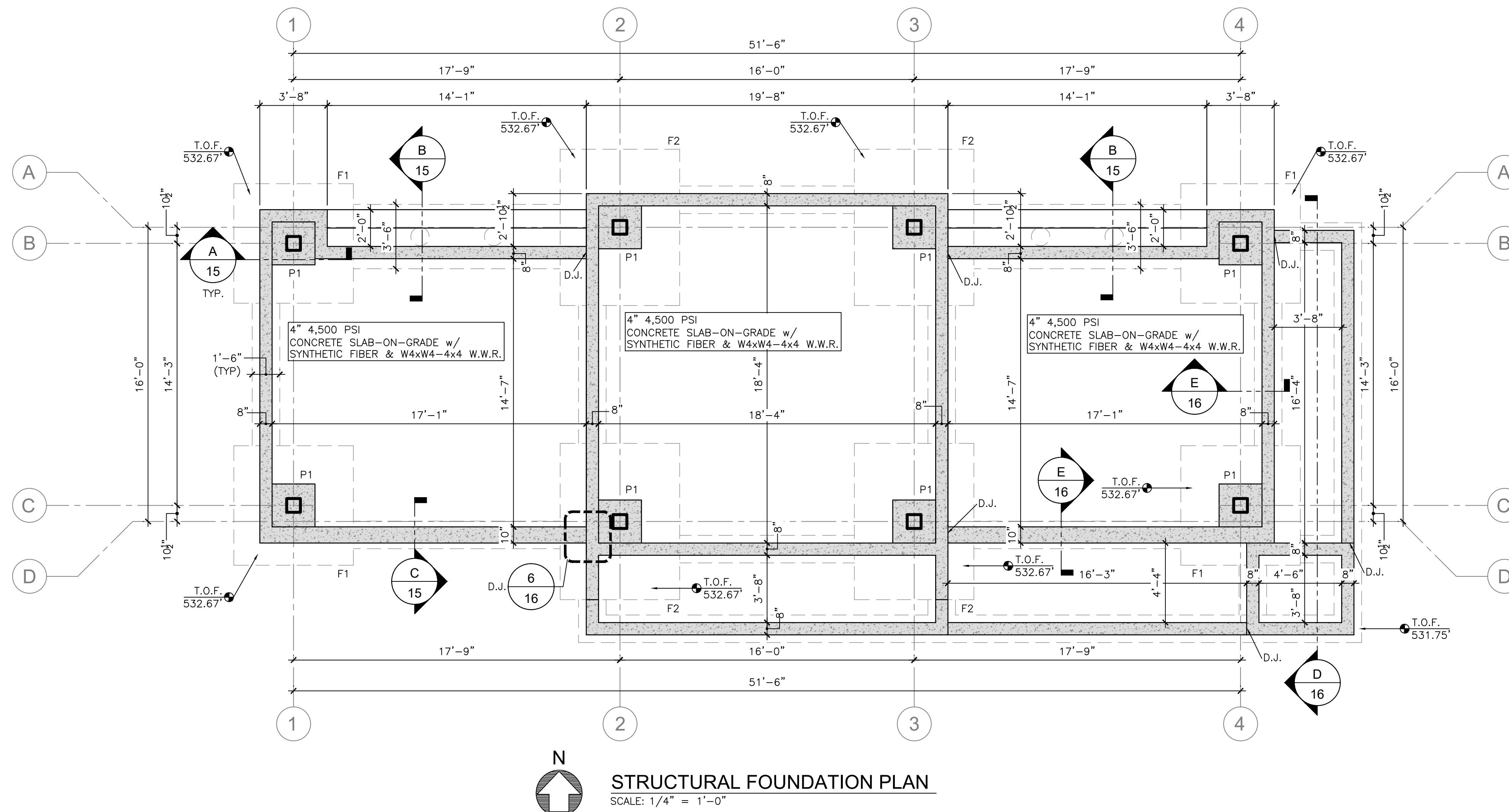
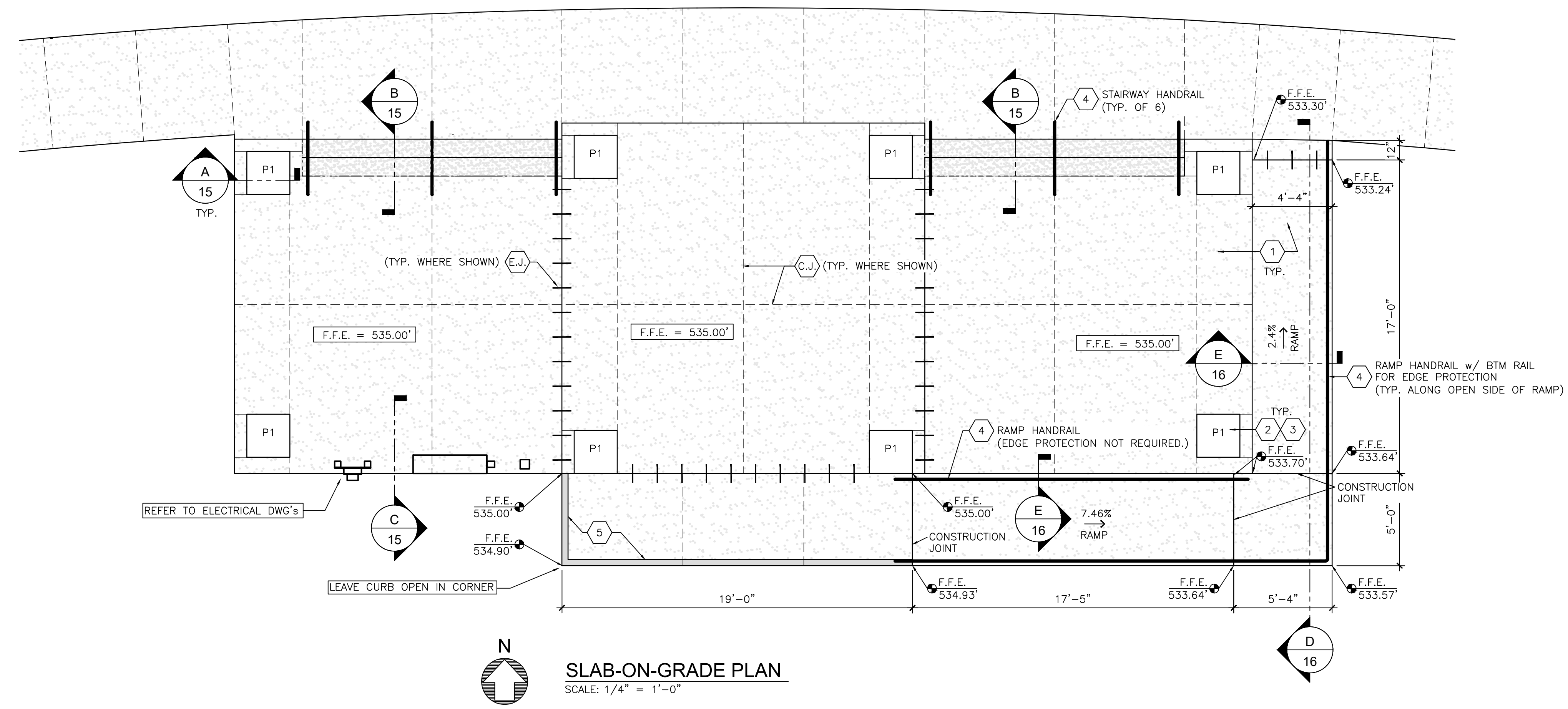
FILE NUMBER: 43468

PLAN KEY NOTES	
1	033000-CAST-IN-PLACE CONCRETE EXTERIOR SLAB-ON-GRADE w/ LIGHT BROOM FINISH
2	033000-CAST-IN-PLACE CONCRETE 28"x28" CONCRETE PIER (TYP. OF 8)
3	044313-ADHERED STONE MASONRY VENEER MANUFACTURED STONE VENEER ATTACHED TO CONCRETE PIER (STYLE SIMILAR OR EQUAL TO "CENTURION", RUSTIC.)
4	055213-PIPE & TUBE RAILING HANDRAIL AS SHOWN ON DWG'S. EXTEND 12" HORIZ. PAST TOP & BTM OF LANDINGS AT RAMPS & STAIRWAYS
5	033000-CAST-IN-PLACE CONCRETE 4" TALL CURB AT RAMP LANDING FOR EDGE PROTECTION

GENERAL CONSTRUCTION NOTES	
1	TOP OF FINISH FLOOR SURFACE SHALL SLOPE NO MORE THAN 1.5% IN THE DIRECTION OF TRAVEL OR CROSS SLOPES ON ANY WALKING SURFACE.
2	COORDINATE ALL EMBEDDED CONDUITS IN FOOTINGS & PIERS AS NECESSARY FOR ELECTRICAL W/ OWNER & ELECTRICAL CONTRACTOR BEFORE POURING CONCRETE.
3	SAW CUT CONTROL JOINT. (SEE TYPICAL DETAIL "5" SHEET 16.)
4	¾" DOWELED EXPANSION JOINT MATERIAL PER SECTION 033000 CAST-IN-PLACE CONCRETE JOINT SEALANT "JS#1" PER SECTION 079200-JOINT SEALANTS. (SEE TYPICAL DETAIL "1" SHEET 15.)
5	PROVIDE ¾" EXPANSION JOINT AROUND CONCRETE PIERS.
6	SEE GRADING PLANS FOR RAMP & WALKING SURFACE ELEVATIONS.
7	DOWEL WALL FOOTINGS INTO FOOTING'S F1 & F2.

DESIGN CRITERIA	
ASCE 7-10 MINIMUM DESIGN LOADS FOR BUILDINGS & OTHER STRUCTURES.	
SNOW:	
P _g	20.0 PSF GROUND SNOW LOAD
P _f	16.4 PSF FLAT ROOF SNOW LOAD
P _m	0.0 PSF MINIMUM FLAT ROOF SNOW
P _s	16.4 PSF SLOPED ROOF SNOW LOAD
C _s	1.0 SLOPE FACTOR
C _e	0.9 SNOW EXPOSURE FACTOR
I _s	1.0 SNOW LOAD IMPORTANCE FACTOR
C _t	1.3 THERMAL FACTOR
WIND:	
V _{ult}	115 PSF ULTIMATE DESIGN WIND SPEED, (3-SECOND GUST)
V ₅₀	90 PSF NOMINAL DESIGN WIND SPEED
RISK CATEGORY	II
EXPOSURE	CATEGORY C
GC _{pi}	0.0 - OPEN BUILDING
MWFRS	±16 PSF MINIMUM ON PROJECTED VERTICAL SURFACE
SEISMIC:	
I _s	1.0 SEISMIC IMPORTANCE FACTOR
S _s	0.316g 0.2s SPECTRAL RESPONSE ACCELERATION
S ₁	0.126g 1s SPECTRAL RESPONSE ACCELERATION
S _{ps}	0.326g SHORT PERIOD DESIGN SPECTRAL RESPONSE ACCELERATION
S _{p1}	0.197g 1s PERIOD DESIGN SPECTRAL RESPONSE ACCELERATION
SITE CLASS:	
CLASS	D DEFAULT VALUE
SEISMIC DESIGN CATEGORY:	
V	2.13 KIP DESIGN BASE SHEAR
W	22.9 KIP EFFECTIVE SEISMIC WEIGHT
C _s	0.093 SEISMIC RESPONSE COEFFICIENT
R	3.5 RESPONSE MODIFICATION COEFFICIENT
DEAD:	
D	30 PSF
ROOF LIVE:	
L _r	20 PSF
SOIL:	
H _o	0 PSF/FT DESIGN LATERAL ACTIVE SOIL PRESSURE
H _r	0 PSF/FT DESIGN LATERAL AT-REST SOIL PRESSURE
q _a	1,500 PSF ALLOWABLE SOIL BEARING PRESSURE
q _p	200 PSF/FT LATERAL BEARING RESISTANCE
μ	0.2 PSF SLIDING COEFFICIENT

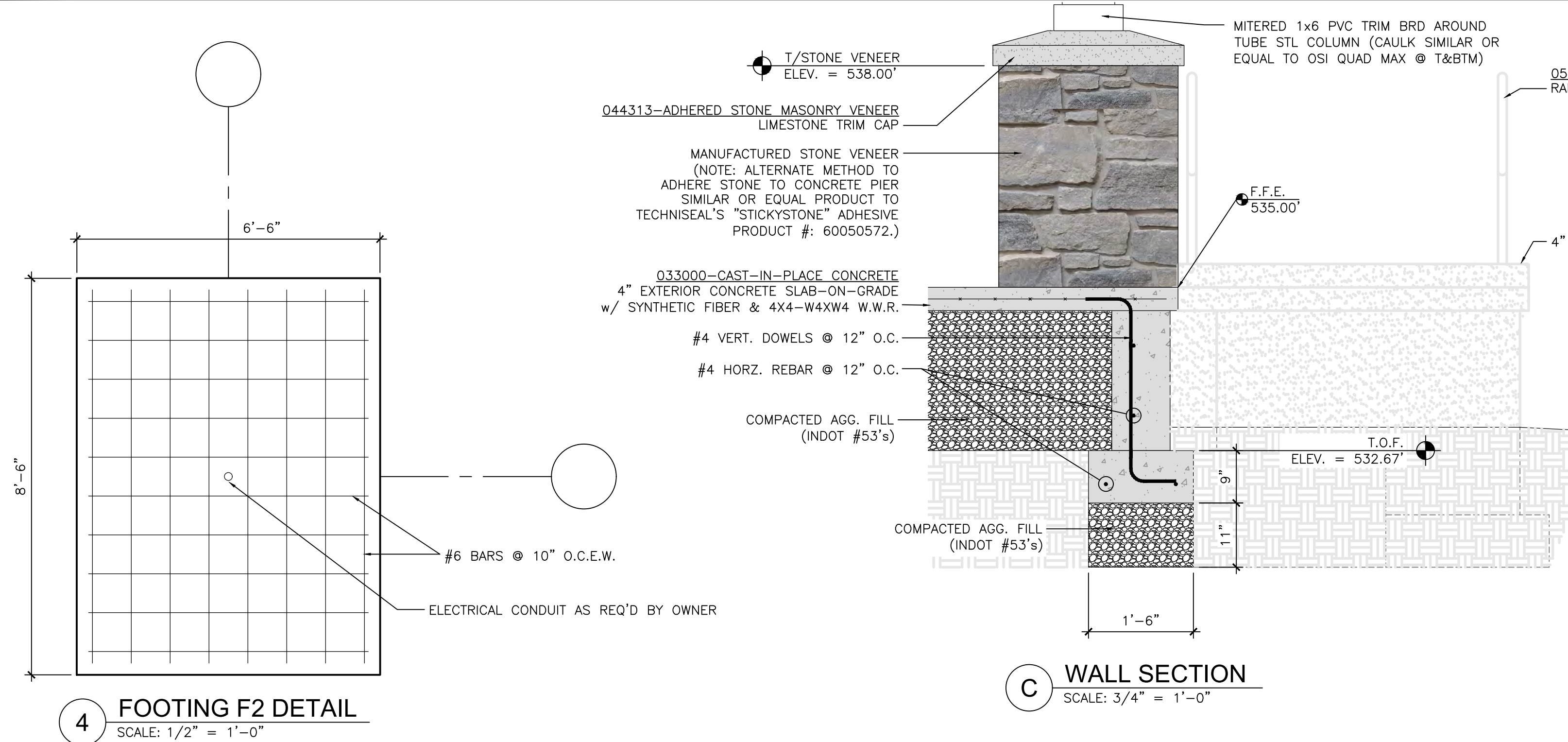
PIER & FOUNDATION SCHEDULE				
ID	DESCRIPTION	T.O.P.	T.O.F.	COLUMN LINE
P1	4,000 PSI CONCRETE PIER 28"x28"W w/#4 TIES @ 10" O.C. & (8)-#7 VERT. DOWELS EVENLY SPACED AROUND PERIMETER.	535.00'	--	ALL
F1	4,000 PSI CONCRETE FOOTING 6'-6"Lx6'-6"Wx20"D w/#6 BARS @ 12" O.C.E.W.	--	532.67'	B1,B4,C1,C4
F2	4,000 PSI CONCRETE FOOTING 8'-6"Lx6'-6"Wx20"D w/#6 BARS @ 12" O.C.E.W.	--	532.67'	A2,A3,D2,D3



PROPOSED SHELTER- FOUNDATION PLAN

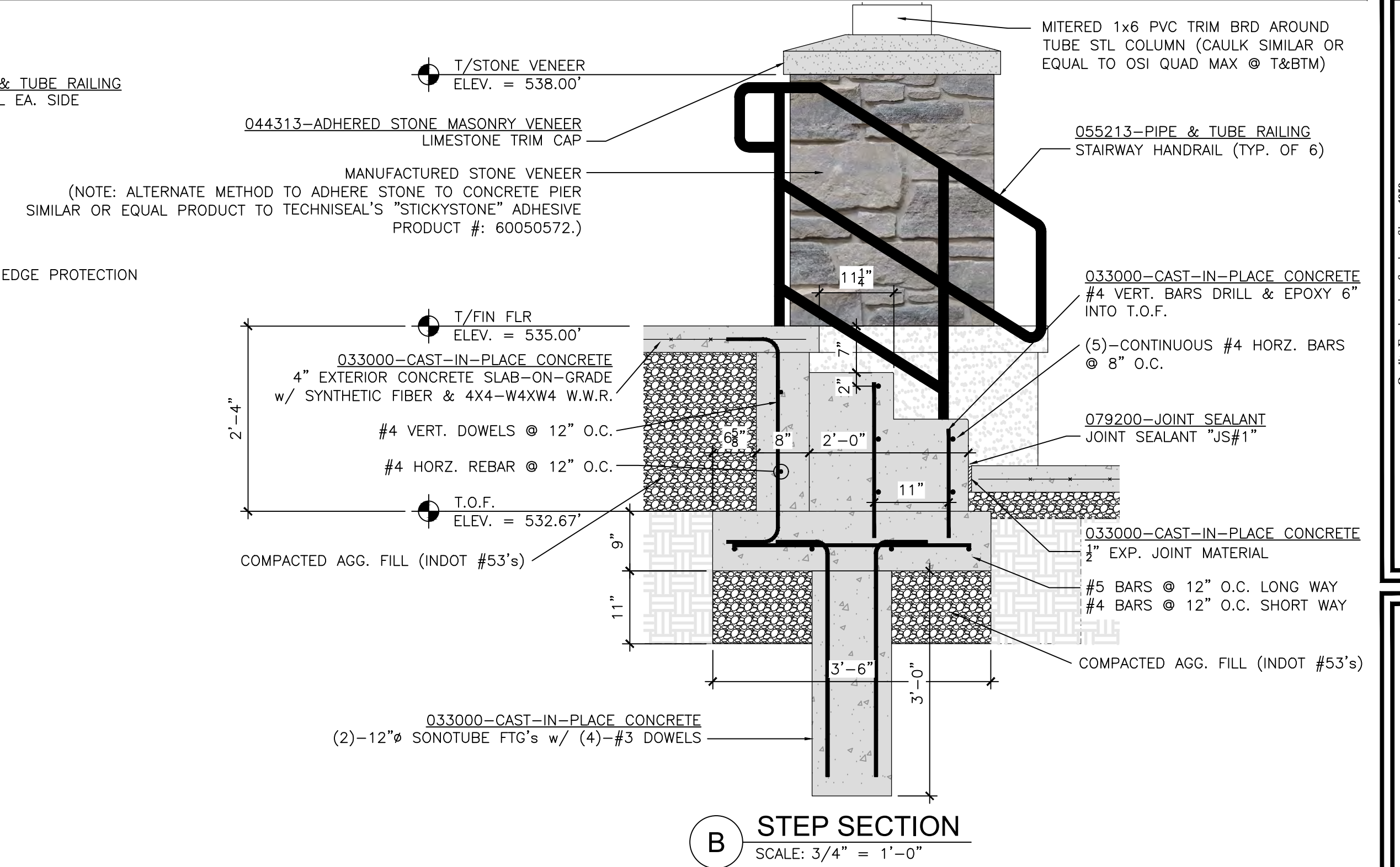
Author: TKIDWELL, Plot Date: 5/6/2024 9:10 AM Path: Z:\CAD\INCOMPLETE\2022115-00_LOGOOTEETEE_NEW PARK IMPROVEMENTS PROJECT\025_PROD\025\DWG\025_SHELTER_FOUNDATION_PLAN.DWG

Author: TKIDWELL, Plot Date: 5/6/2024, 8:59 AM
 Path: Z:\CAD\INCOMPLETE\2024\15-00_LOOGOOTEE_NEW PARK IMPROVEMENTS PROJECT\2024_PROD\CONSTRUCTION\SHEDLER FOUNDATION DETAILS.DWG

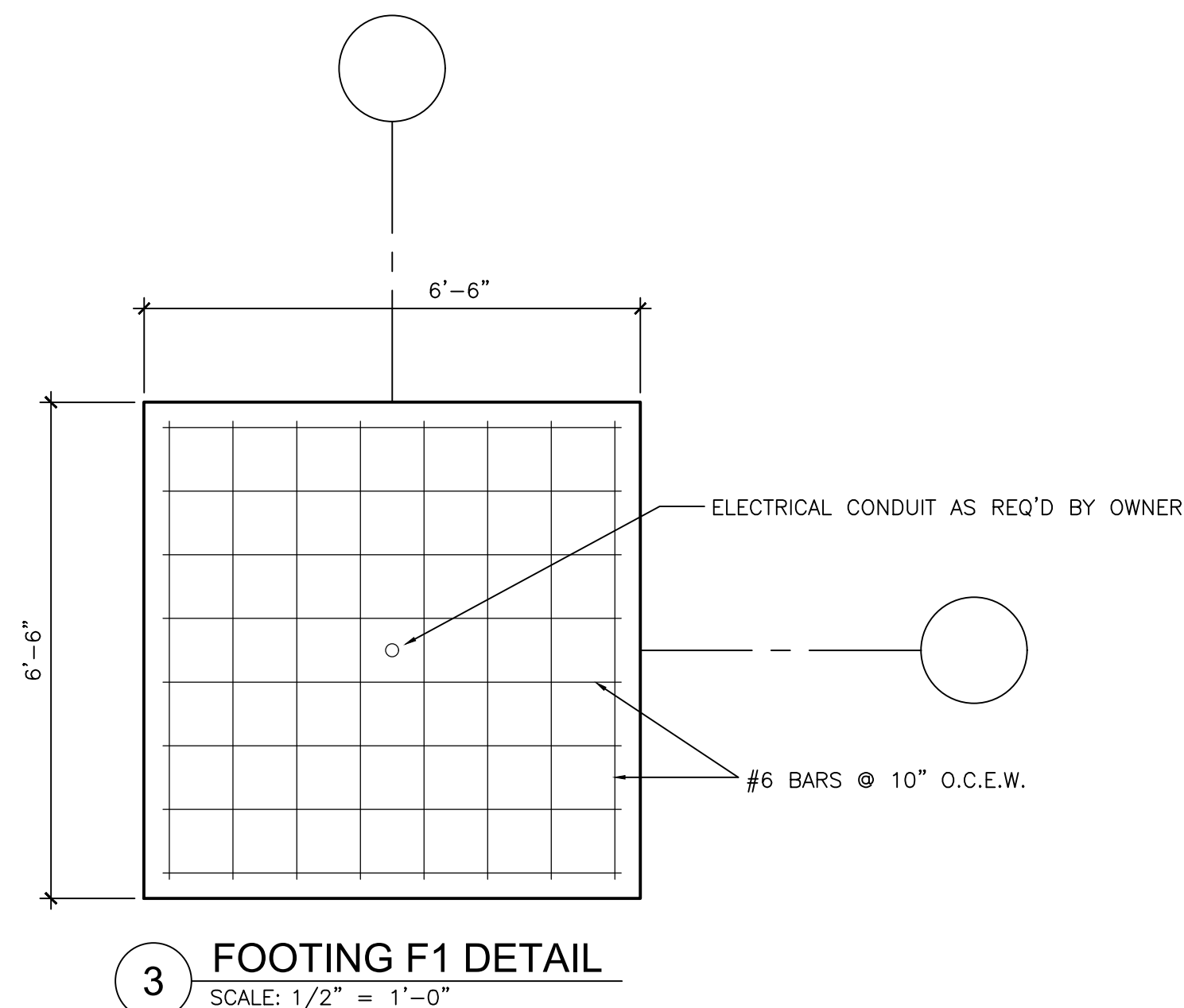


4 FOOTING F2 DETAIL
SCALE: 1/2" = 1'-0"

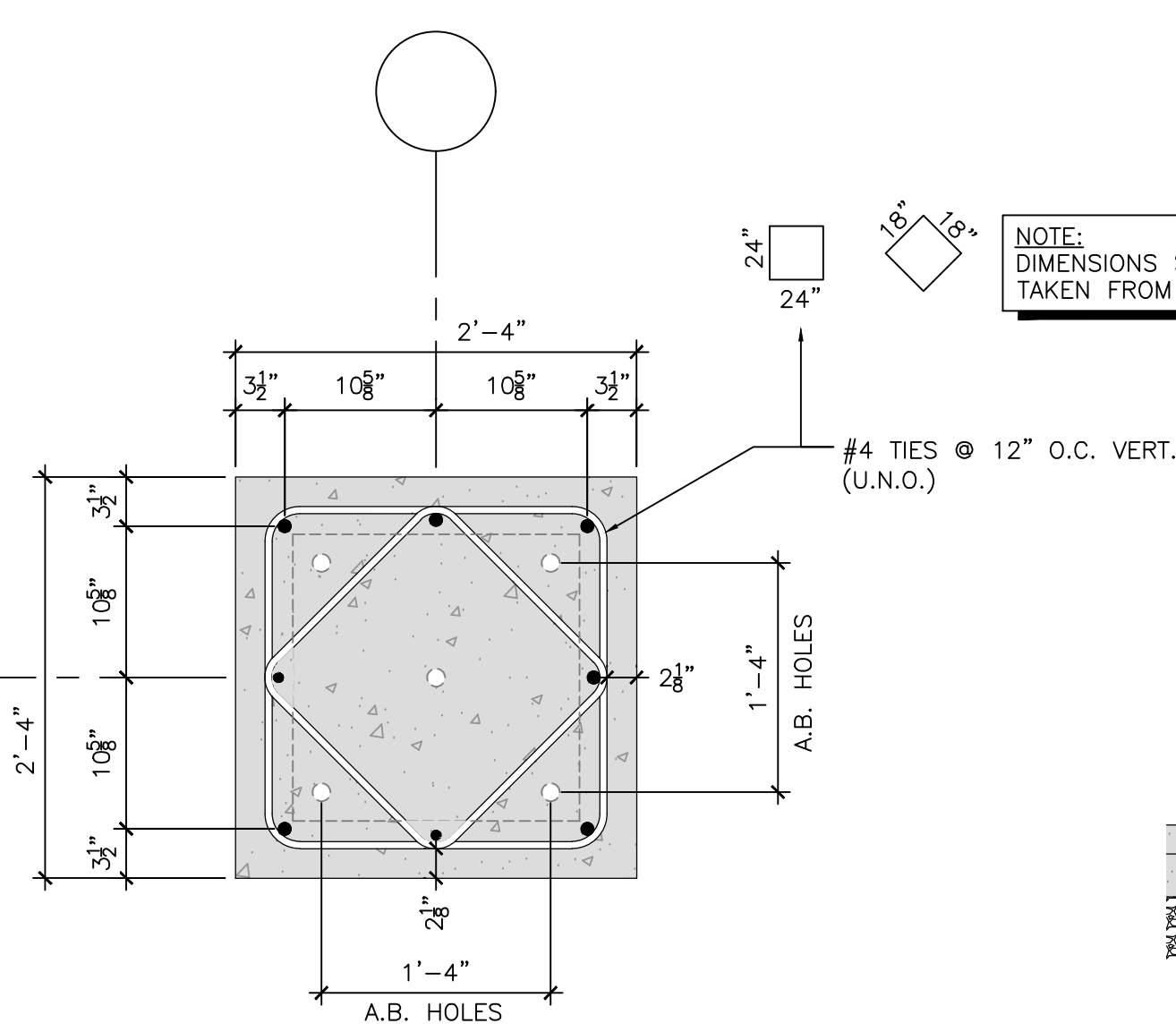
C WALL SECTION
SCALE: 3/4" = 1'-0"



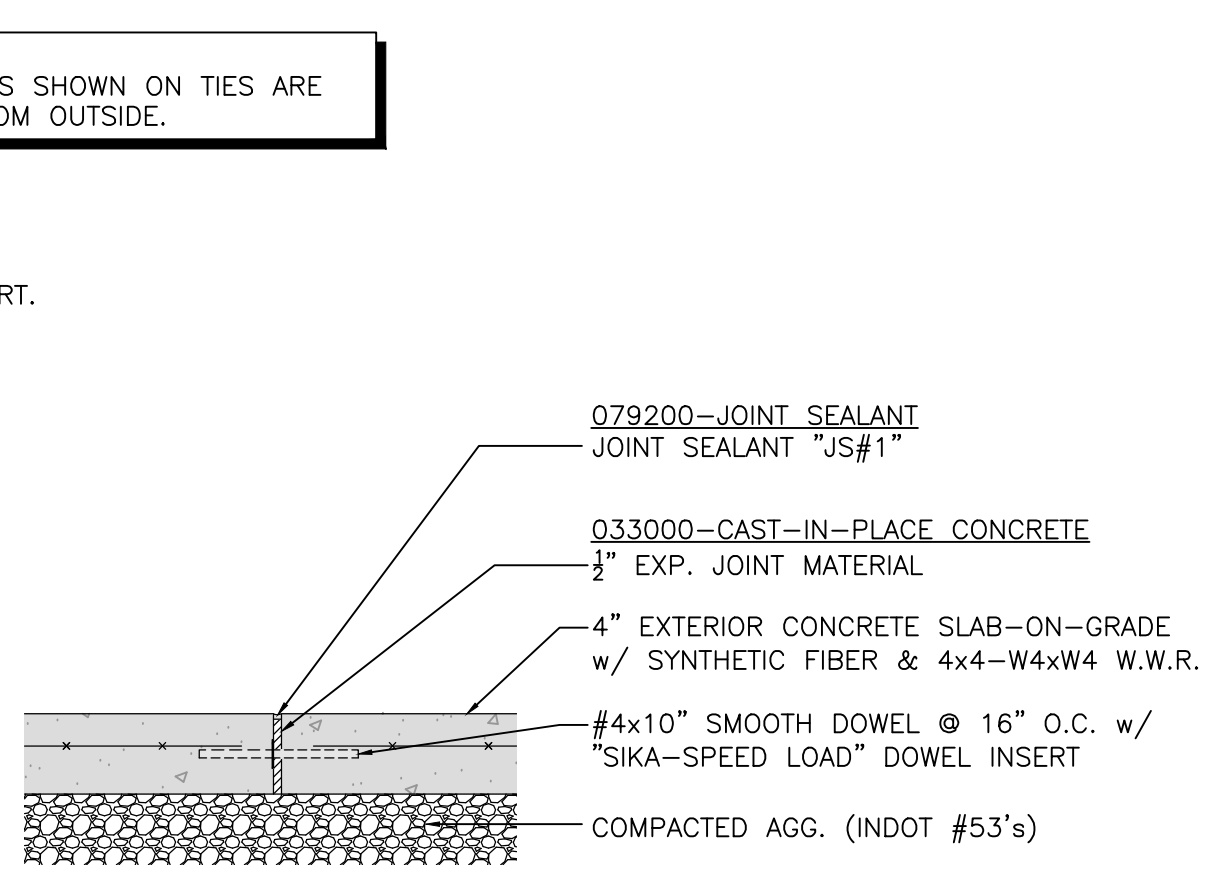
B STEP SECTION
SCALE: 3/4" = 1'-0"



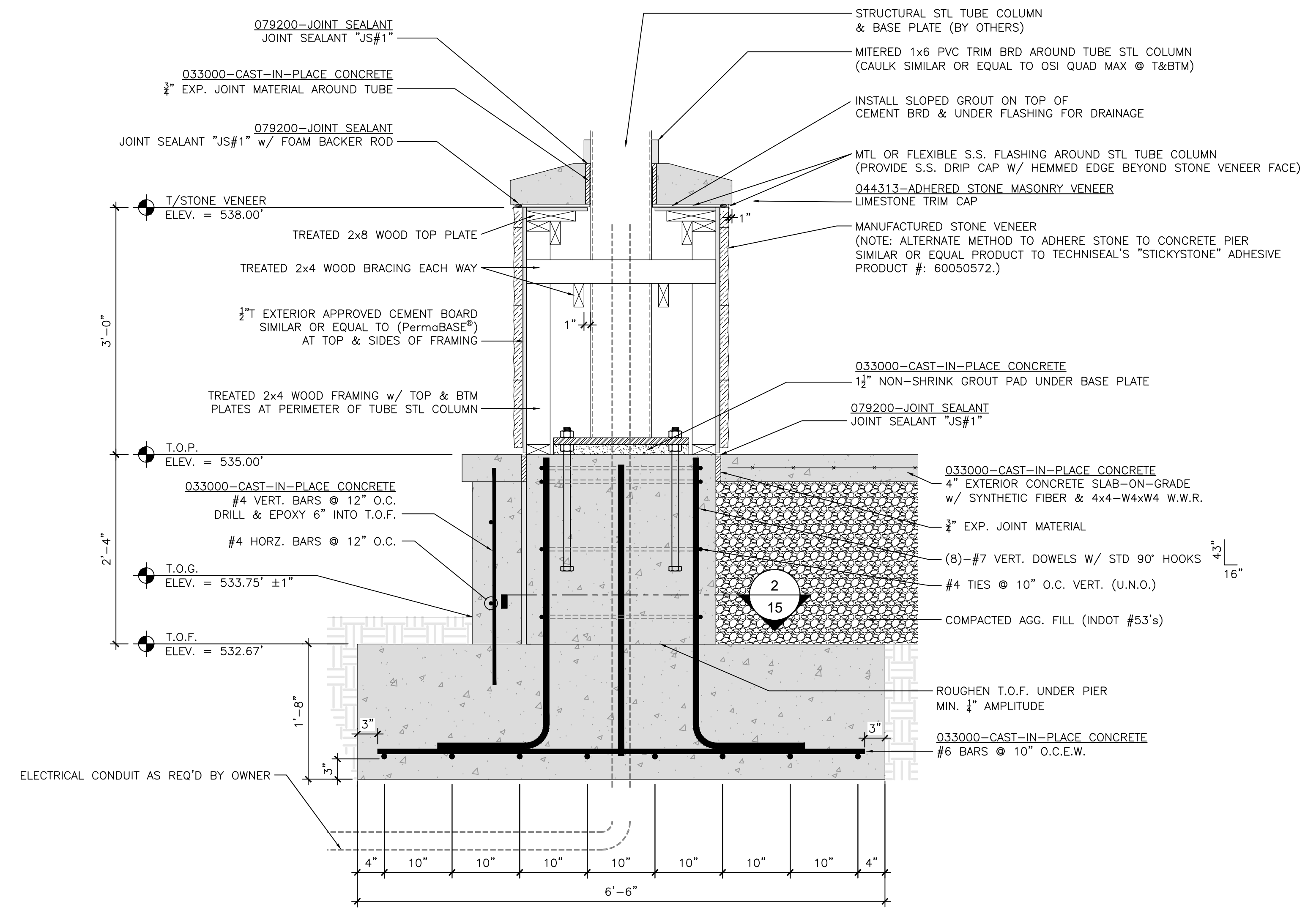
3 FOOTING F1 DETAIL
SCALE: 1/2" = 1'-0"



2 CONCRETE PIER P1 REINF. DETAIL
SCALE: 1" = 1'-0"



1 TYPICAL EXPANSION JOINT DETAIL
SCALE: 1" = 1'-0"



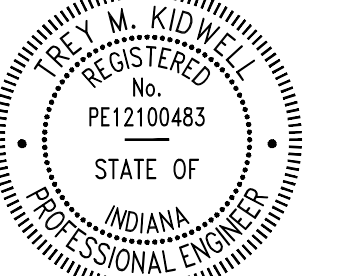
A CONCRETE PIER P1 SECTION
SCALE: 1" = 1'-0"

GENERAL CONSTRUCTION NOTES	
1	RAMP & LANDING SURFACE SHALL HAVE A LIGHT BROOM FINISH.
2	ALL FOOTINGS SHALL SIT ON UNDISTURBED SOIL A MIN. OF 24" BELOW THE FINAL FINISH GRADE.

Midwestern Engineers, Inc.
 Quality Engineering Services Since 1959
 802 West Broadway St., P.O. Box 295
 Loogootee, IN 47533
 Phone: 812-291-2901 Fax: 812-291-2902
 Website: www.midwesterneng.com
 Consultants - Civil - Mechanical - Electrical

PARK IMPROVEMENTS
CHURCH STREET PARK
CITY OF LOOGOOTEE
 MARTIN COUNTY, INDIANA

REVISIONS
 5/6/2024



T.M.K. Kidwell
 4/10/2024

BID SET

© 2024
 Midwestern Engineers, Inc.
 802 West Broadway Street
 P.O. Box 295
 Loogootee, Indiana 47533

DATE	APRIL 2024
DESIGN	T.M.K.
DRAWN	T.M.K.
O.C. CHECK	C.W.R.
PROJECT NUMBER	2022115-00

15
 15 of 20

FILE NUMBER
 43463

PROPOSED SHELTER - FOUNDATION DETAILS

Author: TKIDWELL, Plot Date: 5/6/2024 8:57 AM
 Path: Z:\CAD\INCOMPLETE\2022\1500_LOOGOOTEE_NEW PARK IMPROVEMENTS PROJECT\025_PRODUCTION\DWG\15 STRUCTURAL CANOPY.DWG

REVISIONS

5/6/2024



BID SET

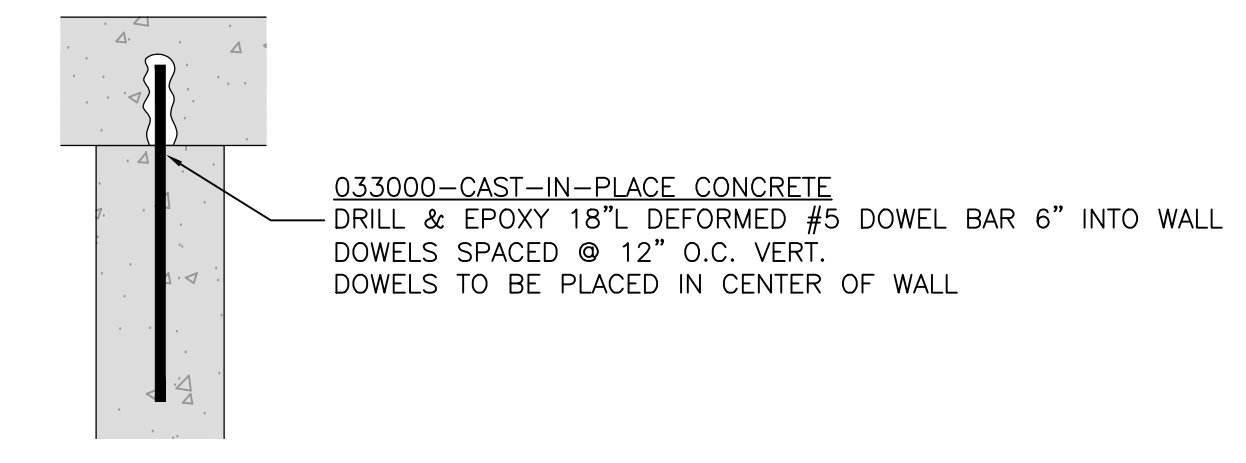
© 2024
 Midwestern Engineers, Inc.
 802 West Broadway Street
 P.O. Box 295
 Loogootee, Indiana 47553

DATE	APRIL 2024
DESIGN	T.M.K.
DRAWN	T.M.K.
O.C. CHECK	C.W.R.
PROJECT NUMBER	2022115-00

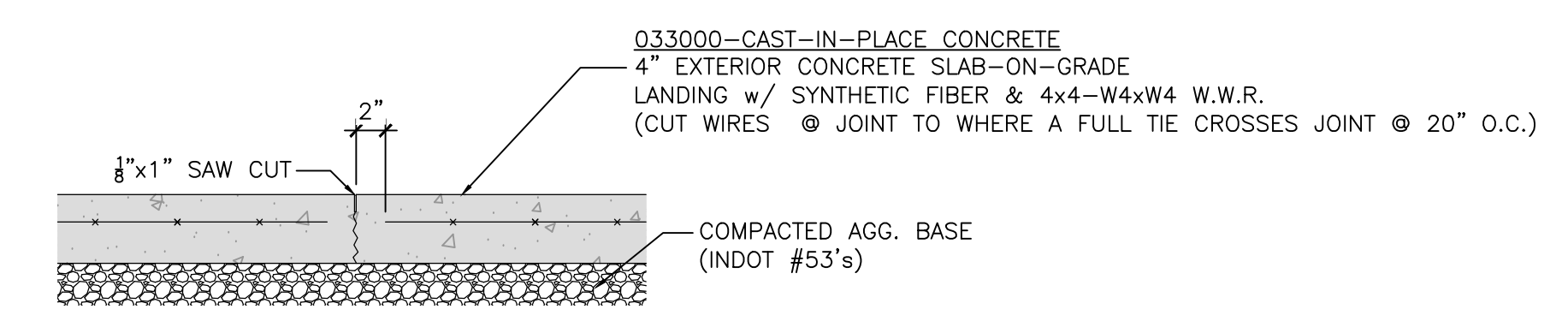
16

16 of 20

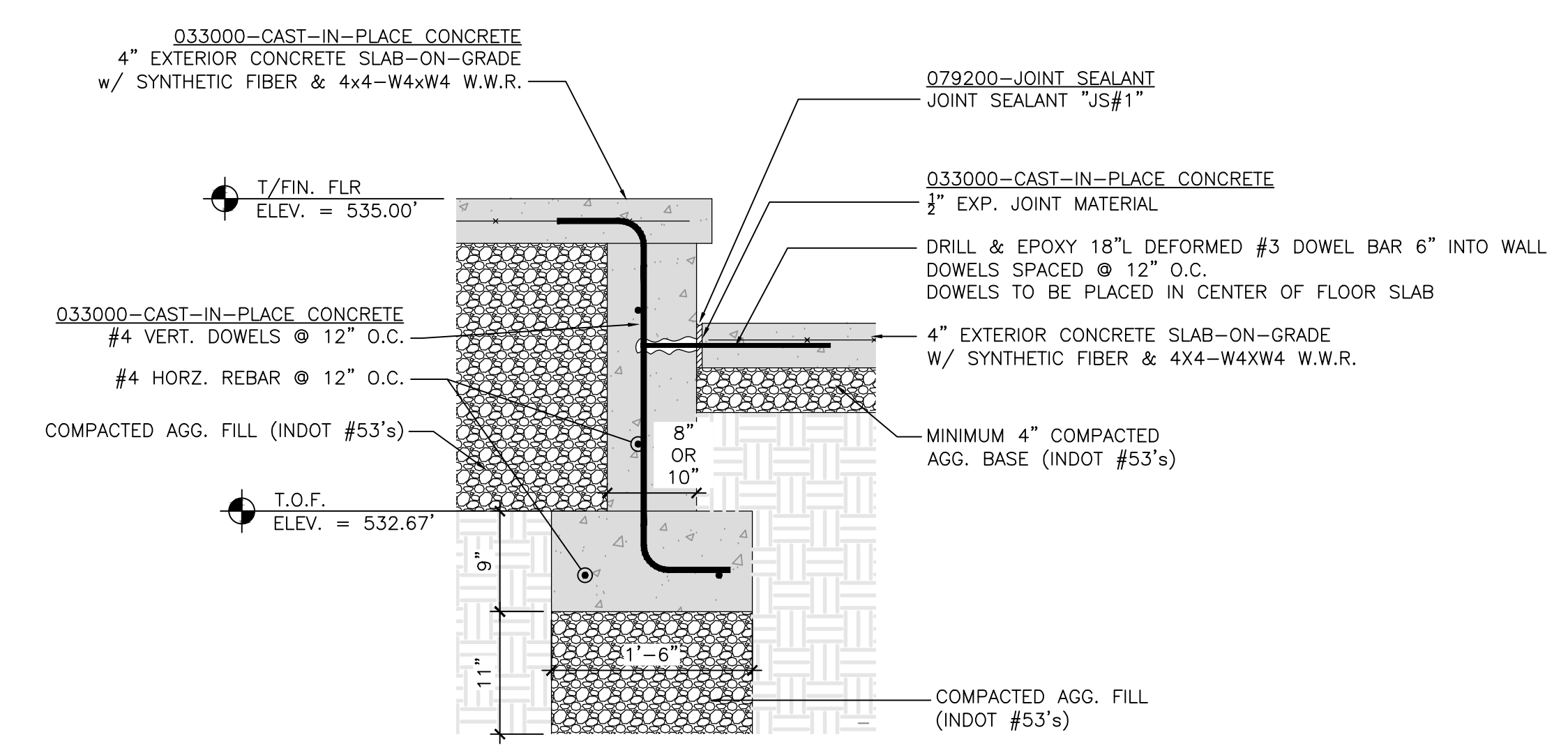
FILE NUMBER
43462



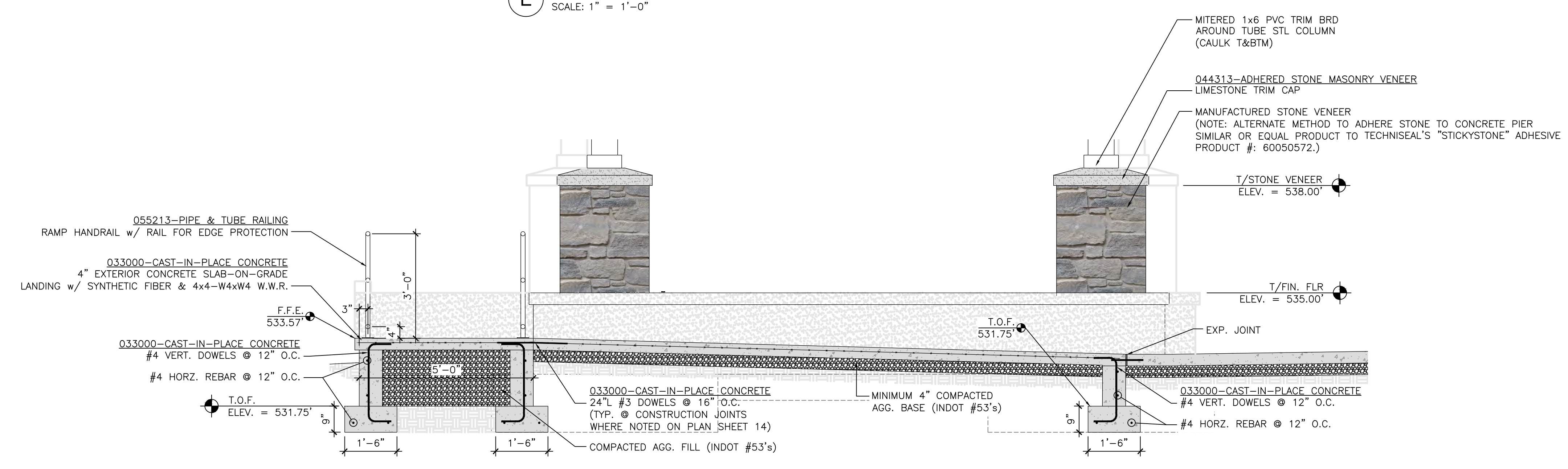
6 TYPICAL DRILL & EPOXY WALL DETAIL
 SCALE: 1" = 1'-0"



5 TYPICAL FLOOR CONTROL JOINT
 SCALE: 1" = 1'-0"



E TYPICAL WALL SECTION WITH DOWELED RAMP SLAB
 SCALE: 1" = 1'-0"



D ADA RAMP SECTION
 SCALE: 1/2" = 1'-0"

GENERAL CONSTRUCTION NOTES

1	RAMP & LANDING SURFACE SHALL HAVE A LIGHT BROOM FINISH.
2	ALL FOOTINGS SHALL SIT ON UNDISTURBED SOIL A MIN. OF 24" BELOW THE FINAL FINISH GRADE.